

MDE/MDG17PR

MAYTAG® COMMERCIAL
SUPER-CAPACITY DRYER



LEGENDARY MAYTAG DEPENDABILITY

Maximizing your equipment investment for over a half century.



Built with optional non-metered design.



FOR YOUR CUSTOMERS:

- Extra-Large 7.4 cu. ft. Capacity
- Easy-To-Use One-Touch Cycle Selection
- High Airflow For Better Clothes Care
- Time Remaining Display
- Optional Top-Off
- No Need to Carry Quarters

FOR YOUR OPERATION:

- TurboVent™—Better Performance On Long Vents
- Advanced Computer Trac® Controls Allow For Easy Programming
- Front Access For Easier Self Service
- Accu Trac® Audit System With Two-Way Data Communication
- Large-Capacity Metal Mesh Lint Filter
- Debit Card Compatibility

BUILT-TO-LAST™ FEATURES:

- Premium Porcelain-Enamel Top
- Four Roller Suspension With Permanently Lubricated Bearings
- Blower Guard Reduces Service Calls
- Best Warranty in the Business

LAUNDRY SOLUTIONS
YOU CAN *DEPEND* ON.

FASTER DRYING WITH
TURBOVENT™ TECHNOLOGY

visit maytagcommerciallaundry.com
or call 800-662-3587



OUR COMMITMENT TO DEPENDABLE QUALITY

At Maytag, we believe durable goods should remain just that. That's why every Maytag® product is constructed of the highest-quality materials and with the utmost in precision craftsmanship. It's also why we stand behind our equipment with solid service and support from our professional Maytag laundry suppliers. Simply put, when you choose Maytag® products, you ensure your peace of mind.



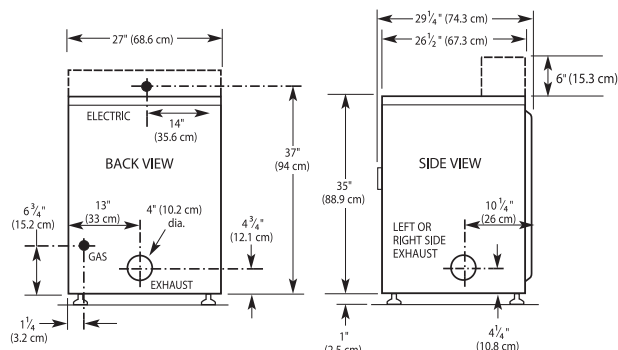
MDE/MDG17PR MAYTAG® COMMERCIAL SUPER-CAPACITY DRYER

Maytag® Commercial Super-Capacity Dryer

MICROPROCESSOR CARD READER-READY

DRYER SPECIFICATIONS	
MODEL	MDE/MDG17PR
MOTOR	
Single-phase, thermoprotected against overload, auto-reset	•
HP (kw)	1/3 (.25)
CAPACITY	
Cu. ft. (liters)	7.4 (209.5)
AIRFLOW	
Gas models — cfm (cmm)	230 (6.5)
Electric models — cfm (cmm)	215 (6.1)
TUMBLE SPEED	
RPM	50 ± 1.5
ELECTRICAL REQUIREMENTS	
MDE model — voltage	240V/60Hz
MDG model — voltage	120V/60Hz
BREAKER/FUSE REQUIREMENTS	
MDE model — amps	30
MDG model — amps	15
APPROXIMATE OVERALL DRAW	
Watts	6,000
EXHAUST DUCT DIAMETER	
In. (mm)	4 (101.6)
ELECTRONIC BURNER IGNITION	
MDG model	•
GAS RATING	
MDG model — BTU/hr. (kcal/hr.)	24,000 (6,048)
GAS INLET	
MDG model — in.	3/8 N.P.T.
AUTOMATIC PRESSURE REGULATOR	
MDG models	•
ADJUSTABLE LEVELING LEGS	
	•
APPROXIMATE WEIGHT	
Crated — lbs. (kg)	140 (63.5)
Uncrated — lbs. (kg)	126 (57.2)

See specific instructions for proper installation. Because of continuous product improvement, Maytag reserves the right to change specifications without notice.



MAXIMUM EXHAUST DUCT LENGTH PER NUMBER OF TURNS

Number Of 90° Turns	Rigid Metal Vent	
	Box Hood and Louvered Style	Angled Hood Style
0	135 ft. (41.2 m)	129 ft. (39.3 m)
1	125 ft. (38.1 m)	119 ft. (36.3 m)
2	115 ft. (35.1 m)	109 ft. (33.2 m)
3	106 ft. (32.3 m)	100 ft. (30.5 m)
4	98 ft. (29.9 m)	92 ft. (28.0 m)

Number Of 90° Turns	Flexible Metal Vent	
	Box Hood and Louvered Style	Angled Hood Style
0	76 ft. (23.2 m)	62 ft. (18.9 m)
1	71 ft. (21.6 m)	57 ft. (17.4 m)
2	67 ft. (20.4 m)	53 ft. (16.2 m)
3	65 ft. (19.8 m)	51 ft. (15.6 m)
4	63 ft. (19.2 m)	49 ft. (14.9 m)



NEW YORK CITY M.E.A.



THE BEST WARRANTY IN THE BUSINESS— 5 YEARS ON ALL PARTS

For a period from the date of original purchase through the time listed above, the designated parts that fail in normal commercial use will be repaired or replaced free of charge for the part itself, with the owner paying all other costs, including labor, transportation and customs duty. Chemical damage is excluded from all warranty coverage. See complete warranty for details.

For more information and pricing, contact:

Equipment Marketers

100 Melrose Avenue
Cherry Hill, NJ 08003

Phone: 800.223.1376

Fax: 856.428.5477

www.equipmentmarketers.net

maytag@equipmentmarketers.net